

Lookbook

Fabrics 2021



Travel without leaving home...

The spring 2021 collection is a homage to the enormous diversity of Africa. Our premium decorative and upholstery fabrics are as expressive as the rich, colourful vegetation and cultures which span the entire continent. Imaginative patterns are combined with flowing batik structures, while eye-popping colours come together with calm, earthy shades to celebrate life. The creative shapes, colours, patterns and structures stimulate a desire for fresh looks. Immerse yourself in Christian Fischbacher's refreshing designs.

Christian Fischbacher

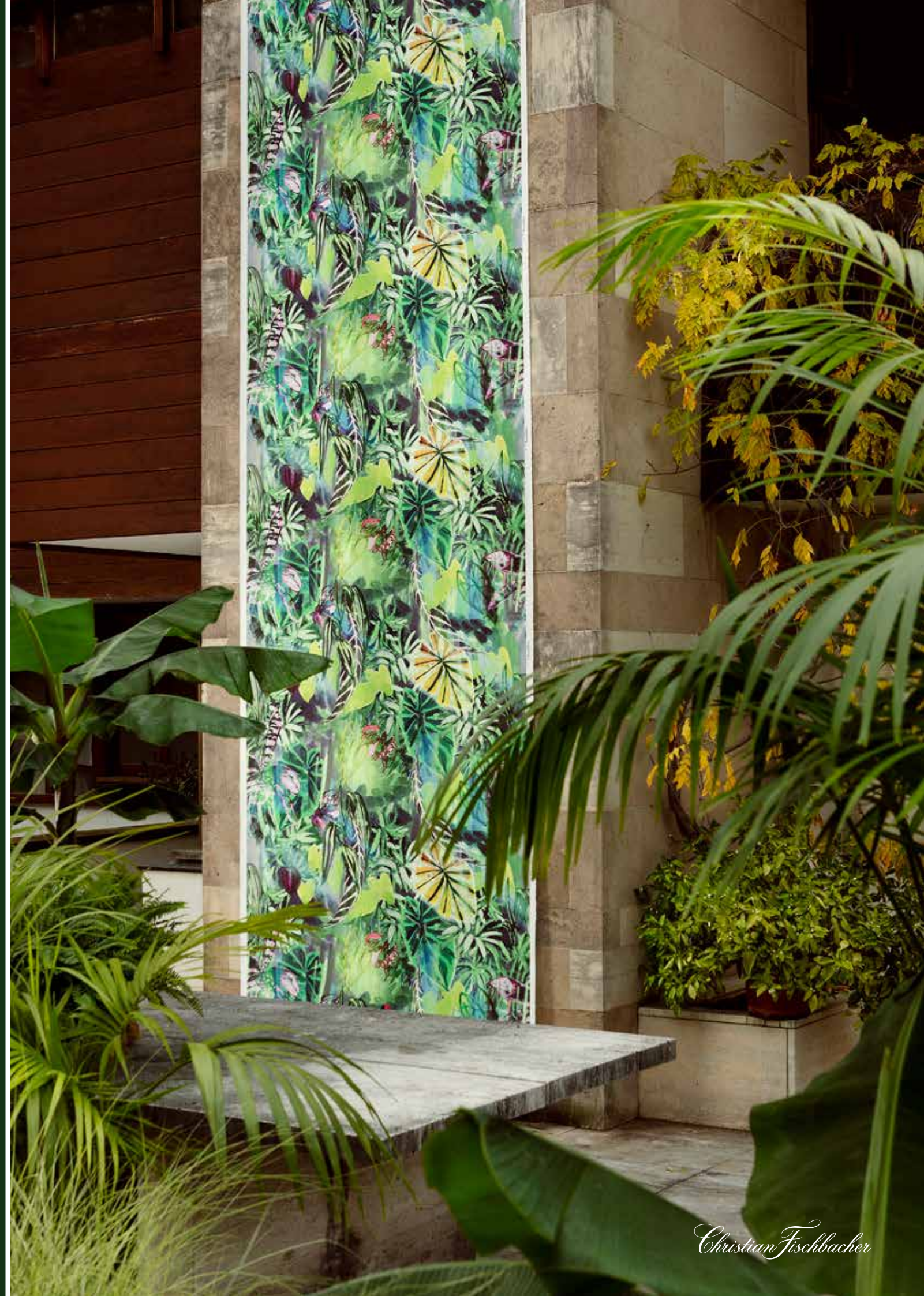
Salonga



Christian Fischbacher's spring 2021 Salonga Collection is dynamic, colourful and bold. The stunning decorative and upholstery fabrics are named after the Salonga National Park. Africa's largest tropical rainforest reserve in the centre of the Congo River basin. Salonga's lush, untouched natural world inspired the design team to create cheerful, expressive patterns. The collection embodies the continent's colourful diversity, from its natural beauty to its vibrant cultures. With their strong character, the fabrics invite us on a journey without having to pack our bags, or leave our homes. The textiles are versatile, and easy to use, with some also being suitable for outdoor use.

Hand-painted with lively brush strokes, jungle fauna covers the SALONGA curtain fabric, bringing an exotic flair close enough to touch. Bright wax prints typical of West African clothing also feature in Christian Fischbacher's bold designs this season, blurring the boundaries between fashion and interiors. Imaginative patterns are combined with flowing batik structures, while eye-popping colours are twinned with earthy shades in complex layers of shapes, colours and structures.

Time and time again, Christian Fischbacher's refreshing designs play on extremes. Thanks to their versatility, the decorative prints of the hand-painted MANGROVE and POOL designs lend themselves to creative use. The indoor-outdoor fabrics make a statement in pared-down interiors, but they can also be combined with a range of vibrant colours, patterns and structures for a warm, lively interior space.





BEHIND THE DESIGN

Salonga



WWW.FISCHBACHER.COM

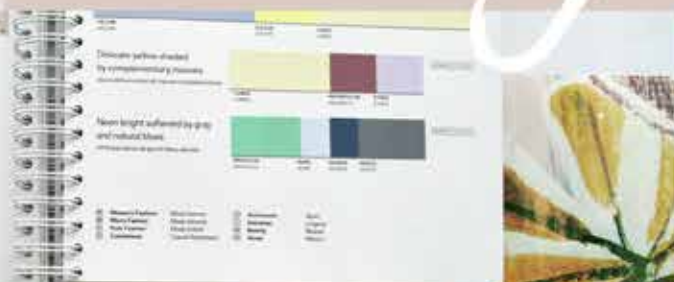


Christian Fischbacher



BEHIND THE DESIGN

Salonga



WWW.FISCHBACHER.COM

Christian Fischbacher



BEHIND THE DESIGN

Salonga

WWW.FISCHBACHER.COM

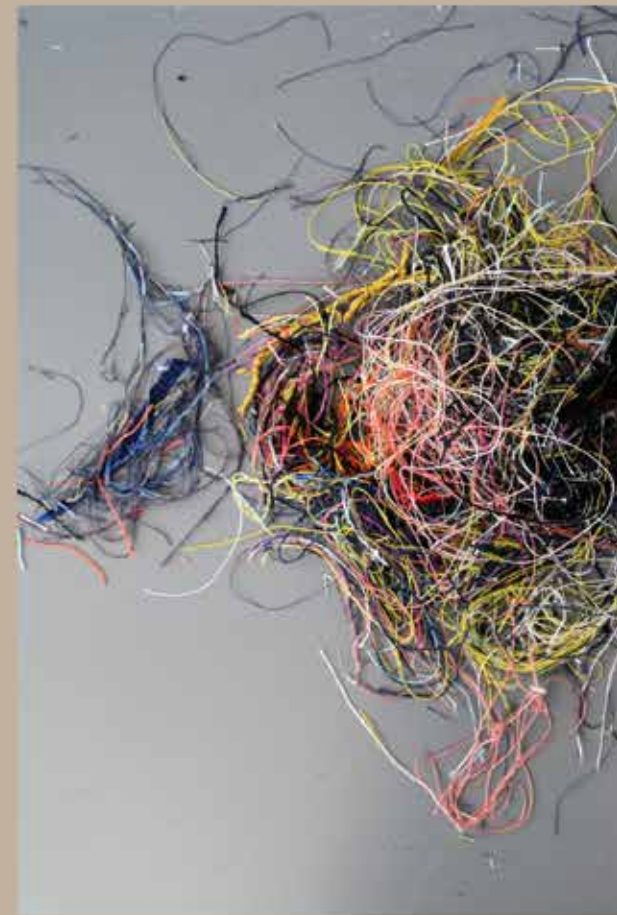
Christian Fischbacher



Indoor/Outdoor: Pool | Mangrove | Lake | Lagoon | Benu Talent FR



WWW.FISCHBACHER.COM



BEHIND THE DESIGN

Lake
Lagoon



Christian Fischbacher



BEHIND THE DESIGN

Pool



WWW.FISCHBACHER.COM



Indoor/Outdoor: Pool | Lake | Lagoon | Benu Talent FR

Christian Fischbacher



Indoor/Outdoor: Pool | Mangrove | Lake | Lagoon | BENU Talent FR



WWW.FISCHBACHER.COM

Christian Fischbacher



BEHIND THE DESIGN

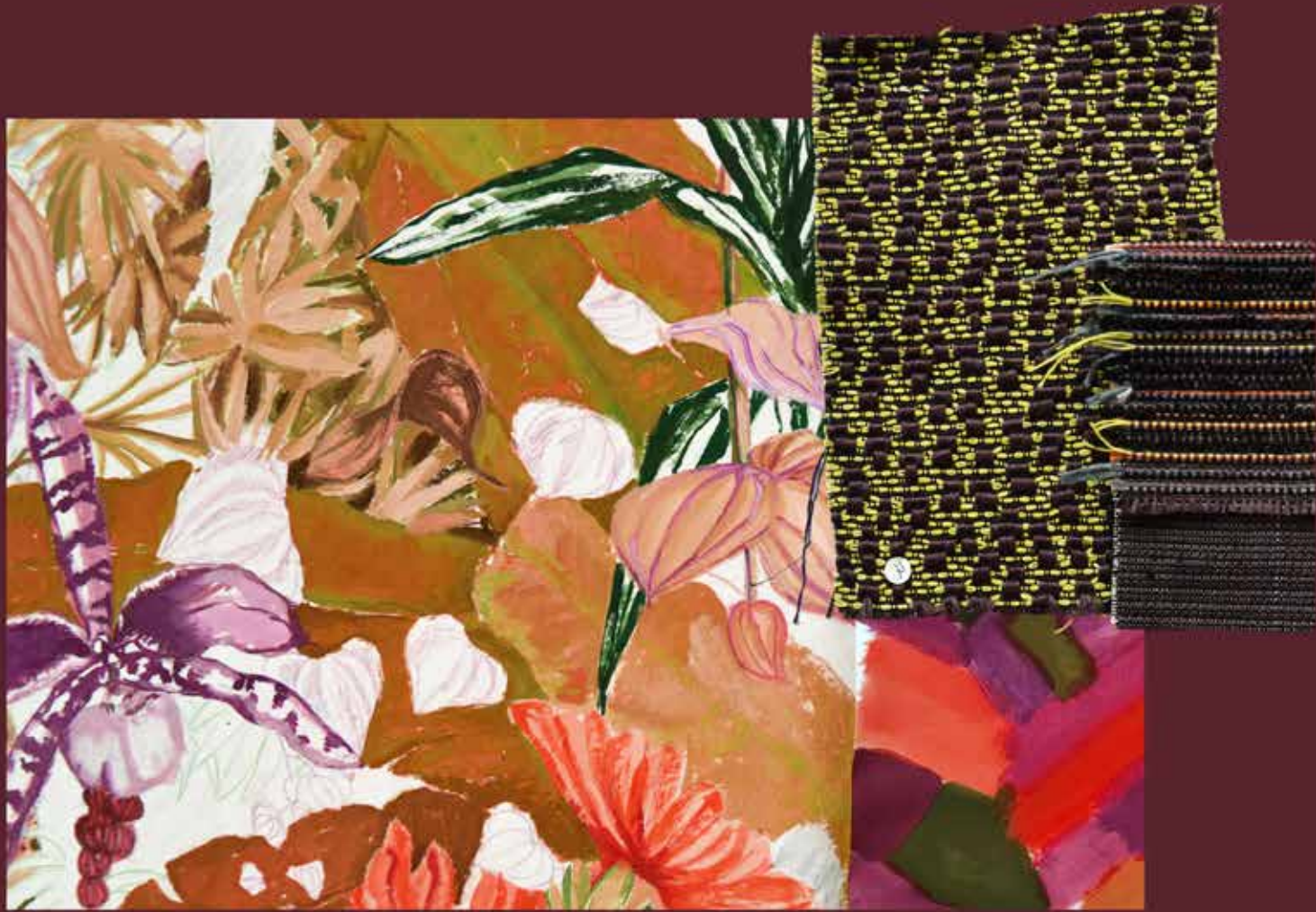
Mangrove

WWW.FISCHBACHER.COM



Christian Fischbacher





BEHIND THE DESIGN

Mangrove



WWW.FISCHBACHER.COM



Lagoon | Lake | Mangrove | Oondo | Bongo | Sunbath | Ventura

Christian Fischbacher

Djembe

RHYTHMS



"Inspired by the sounds of Africa, Djembe Rhythms is a collection for all the senses," says Camilla Fischbacher, Creative Director at Christian Fischbacher. "We succeeded in translating the traditional techniques and patterns of the African continent into atmospheric designs. This is borne out by the names of the high-quality decorative and upholstery fabrics, which include handmade African instruments."

With their soothing, earthy tones, the textiles convey a primeval closeness to nature and have a cosy, calm aura. The materials and innovative yarn blends used create an interesting interplay of coarse and fine, velvety soft and rough. Expressive designs invite us to discover and touch the different textures of Djembe. With their interplay of shape and colour, tactile appeal and visual statement, the fabrics celebrate handmade artefacts and form an exciting antithesis to everyday lives dominated by technology.

The collection features interconnected patterns inspired by Kuba cloth from the Democratic Republic of the Congo. Great attention to detail was given to the hand drawn images of the lush flora and fauna which invite you to discover the beauty of Africa with out ever leaving home. The design studio's bright graphics were inspired by the large-scale, colourful murals painted by the Ndebele people of South Africa. Within this tradition, women decorate the façades of houses with ab-stract patterns using chicken feathers.



WWW.FISCHBACHER.COM



INSPIRATION

Djembe

RHYTHMS



Christian Fischbacher



BEHIND THE DESIGN

KwaZulu





INSPIRATION

Lake
Lagoon

WWW.FISCHBACHER.COM

Indoor/Outdoor: Lake | Lagoon | BENU Talent FR

Christian Fischbacher





INSPIRATION

Djembe



WWW.FISCHBACHER.COM



Conga | Oondo | Kalimba | Djembe | Ventura | Malaika

Christian Fischbacher





Bongo | Odondo | Ventura | Djembe | Kalimba | Odondo | Odondo | Bongo

WWW.FISCHBACHER.COM



Christian Fischbacher



INSPIRATION

Kiondo



WWW.FISCHBACHER.COM



Christian Fischbacher



INSPIRATION

Malaika



WWW.FISCHBACHER.COM

Christian Fischbacher



Deka | Oondo | Kalimba | Kiondo | Kalimba | Salonga | Elani | Katanga | Tana | Nilo

WWW.FISCHBACHER.COM



INSPIRATION

Deka

& TREND COL. GREEN



Christian Fischbacher



Kiondo | Salonga | Lagoon | Varese



WWW.FISCHBACHER.COM



Lake | Lagoon | Varese | Lagoon | Kiondo | Ventura | Odondo

Christian Fischbacher

SALONGA

Welcome to the jungle! SALONGA is a thicket – impenetrable and extravagant. The hand-painted design was created at the company’s in-house studio. Its style is spontaneous and impulsive. High-quality digital printing makes it possible to see every single brush stroke. Three different versions depict the scene in the colours and light of morning, noon and night. The design spans the full width of the fabric and is printed on a fine polyester fabric to mimic the look of raw silk.

LAKE und LAGOON

The yarns used for the indoor/outdoor upholstery fabrics LAGOON and LAKE have a very natural, cosy feel. As well as boasting this tactile appeal, the material is very easy-care and can be laundered in a conventional washing machine. The woven fabrics do not contain any toxic substances and are hypoallergenic. They have been shown to be very lightfast and are resistant to abrasion, making them ideal for indoor and outdoor use. LAKE and LAGOON meet the Oeko-Tex 100 Standard. They are resistant to chlorine and salt water, dirt-repellent and lint-free.

LAKE has a pleasantly coarse structure reminiscent of a rug. Strands of yarn consisting of several colours – in some cases contrasting – are collected together in bundles. A voluminous bouclé yarn creates a three-dimensional surface structure. Available in six colourways, LAKE is perfectly coordinated with LAGOON.

The small geometric pattern of LAGOON results from the vibrant combination of a different coloured warp and weft. Available in eight colourways, LAGOON is perfectly coordinated to match with LAKE.

PURIS

PURIS is a floor-to-ceiling, fine yet dense cotton percale which can be used as a high-quality lining or as a lightweight decorative fabric. Hung at a window, the material looks opaque and filters the light. A crisp drape underlines its clear, fresh appearance. Available in 25 fashionably matt colours.

POOL

POOL is dynamic, colourful and bold. Inspired by African wax prints and fashion, this design is inspired by the magnificent continent of Africa. The hand-painted design twins refreshing, harmonious new colour combinations with complex layers of graphical shapes and batik structures. The design spans the full width with a semi-staggered repeat and is available in a terracotta/blue colourway and a subtle, natural earthy shades. POOL can be used for curtains or as a lightweight upholstery fabric. Made from 100% acrylic, it is extremely lightfast and finished with a Teflon coating to repel water and dirt.

MANGROVE

MANGROVE is dynamic, colourful and bold. Inspired by African wax prints and fashion, this design is inspired by the magnificent continent of Africa. The hand-painted design twins refreshing, harmonious new colour combinations with complex layers of floral shapes and batik structures. The pattern spans the full width and is available in a terracotta colourway or shades of blue. MANGROVE can be used for curtains or as a lightweight upholstery fabric. Made from 100% acrylic, it is extremely lightfast and finished with a Teflon coating to repel water and dirt.

TANA

Made from acrylic, TANA is a soft, flowing fabric measuring 315 cm.

FINOLINO

FINOLINO is a plain weave consisting of a yarn-dyed linen blend. A subtle chintz finish gives this railroad fabric a slight soft sheen. FINOLINO comes in eight different colourways.

KWAZULU

The rich vegetation of the South African KwaZulu-Natal province inspired the intricate jungle design KWAZULU, which was drawn by hand in the company’s design studio. Its pared-down monochrome look means that the design does not look cluttered: instead, it makes a calm, clear statement. The fine drawing is printed on a ribbed base which is reminiscent of raw silk.

DJEMBE

The intricate jacquard velour DJEMBE was inspired by Congolese Kuba cloth – both in its graphical design of interconnected diamonds and in its use of bouclé and clipped pile to create the pattern. The result is an attractive pattern in relief which has a silky sheen when it catches the light. The pattern can be used in any direction.

BONGO

BONGO is a simple, coarse plain weave with a subtle melange. It is soft to the touch and versatile – suitable for use as an upholstery fabric or for curtains.

ODONDO

The loops of the bouclé yarn in the weft lend the upholstery fabric ODONDO a wool-like appearance. Available in new tone-in-tone colourways, this material is suitable for a range of uses.

CONGA

An upholstery fabric as life-affirming as the sound of the CONGA drum that gave it its name. The harmonious shades of the coarsely twisted yarns give it a special appeal.

KALIMBA

The jacquard KALIMBA combines a fine warp with a chenille yarn in the weft to create an interesting surface. The warp largely covers the weft, with a rib weave giving rise to a subtle diamond pattern.

MALAIKA

Malaika twins a hand-applied block print with graphical embroidery. The striped design was inspired by the large-scale murals painted by the Ndebele people of northern South Africa. The women of this ethnic group decorate their façades with large, colourful geometric patterns.

DEKA

DEKA is an original, melange net consisting of a leno fabric with a voluminous, smooth drape. The floor-to-ceiling material features a rich range of melange shades. Natural blues and greys intertwine with the white base yarn.

KIONDO

Inspired by Kenyan sisal bags, KIONDO draws on the rough aesthetics of these basket bags, which are usually decorated with graphic patterns. A chenille yarn in the weft gives the fabric its slightly irregular surface. It is a deliberate design feature that the yarns twist arbitrarily: this results in irregularities which round out the design. The soft, flowing jacquard comes in seven colourways from natural tones to a vibrant, contemporary purple.

NILO

NILO is a floor-to-ceiling, yarn-dyed, semi-transparent curtain fabric. Its natural appearance results from the unique weaving technique. NILO has a soft drape and a matt look. It is available in seven different colours.

KATANGA

Alternating between matt and a subtle sheen, the stripes on the KATANGA curtain fabric use the clip cord or Scherli technique. Linked by a contrasting line, KATANGA exudes an elegant calm.



Bildnachweis | Picture Credits

DE | Der Inhalt des Dokumentes ist ausschliesslich für Präsentationen und als Arbeitshilfe konzipiert. Einzelne Bilder sind in Eigentum Dritter und dürfen in keiner Art und Weise reproduziert werden. Alle anderen Bilder und geistiges Eigentum sind urheberrechtlich geschützt von Christian Fischbacher Co. AG.

EN | Contents of this document are exclusively for demonstration and guidance. Individual images may belong to third parties and will be clearly stated so and may not be reproduced in any way. All other imagery and intellectual property are copyright of Christian Fischbacher Co. AG.

KWAZULU: iStock-1186696707
DJEMBE RHYTHMS: iStock 140255944, 538791446, 970600482, 1259735389
KIONDO: iStock-140255944
MALAIKA: iStock 157423665, 469862917, 972181954, 1188270639, 1216839075
Camilla Fischbacher

Publishing Information

Publisher:
Christian Fischbacher Co. AG,
Mövenstrasse 18, CH-9015 St. Gallen

Headquarter Switzerland

Christian Fischbacher Co. AG
Mövenstrasse 18
9015 St. Gallen, Switzerland
T +41 71 314 66 66
F +41 71 314 66 67
info@fischbacher.ch

Germany & Austria

Christian Fischbacher GMBH
Simonshöfchen 27
42327 Wuppertal, Germany
T +49 202 739090
E-Mail De: Verkauf.de@Fischbacher.com
E-Mail Au: Verkauf.at@Fischbacher.com

Italy

Christian Fischbacher SPA
Via Roggia Lubiana, 141
22040 Alzate Brianza Co, Italy
T +39 031 55 78 01
F +39 031 55 78 50
info@fischbacher.it

Benelux

Christian Fischbacher B.V.
Pedro De Medinalaan 11
1086 Xk Amsterdam, Nederland
T +31 20 647 22 66
F +31 20 643 18 87
info@fischbacher.nl

Showroom London

Christian Fischbacher Ltd.
Design Centre Chelsea Harbour
Unit 107 First Floor Centre Dome
London SW10 OXE, Great Britain
T +44 20 7351 9332
london@fischbacher.com

Japan

Nihon Fisba K.K.
CH Building 2F
2-7-28 Minami Aoyama
Minato-Ku, Tokyo, 107-0062, Japan
T +81 3 5775 0605
F +81 3 5775 5480
info@fisba.co.jp

Showroom Zurich

Christian Fischbacher Co. AG
TMC, Showroom 657
Thurgauerstrasse 117
8152 Glattpark/Opfikon, Switzerland
T +41 71 314 66 66
zuerich@fischbacher.com

Showroom Munich

Christian Fischbacher GMBH
Gabelsbergerstraße 9
80333 Munich, Germany
T +49 89 51 50 36 93
E-Mail muenchen@fischbacher.com

Showroom Milano

Christian Fischbacher SPA
via Giuseppe Sacchi 5
20121 Milano, Italy
T +39 02 50041664
info@fischbacher.it

France

Christian Fischbacher S.A.R.L
20 Rue Du Mail
75002 Paris, France
T +33 1 42 36 97 00
F +33 1 42 36 98 00
info@fischbacher.fr

Showroom Moscow

Christian Fischbacher
Gusyatnikov Pereulok, 11
Office 508
101000 Moscow, Russia
T +7 985 7680841
moscow@fischbacher.com

